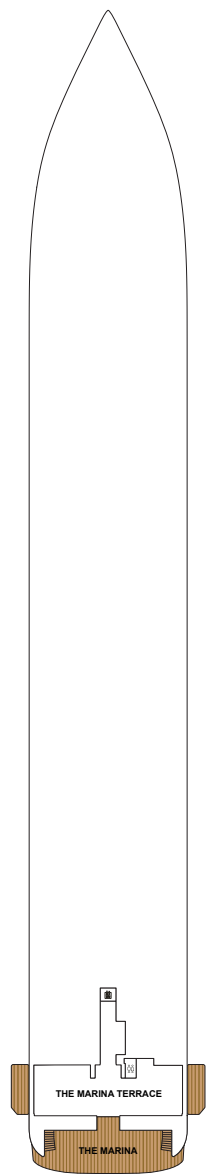
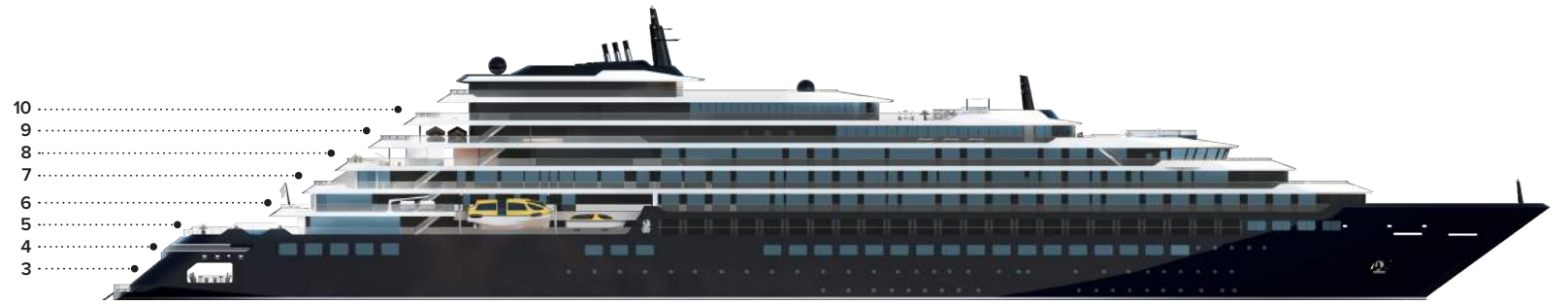
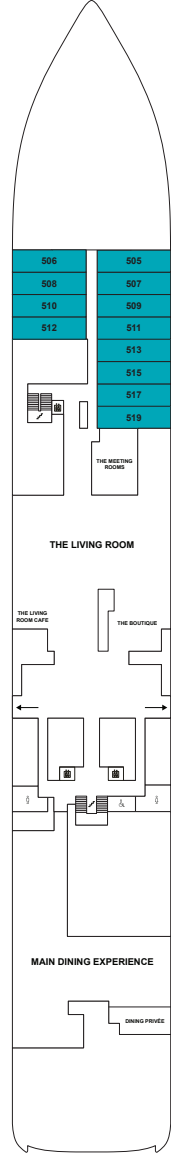




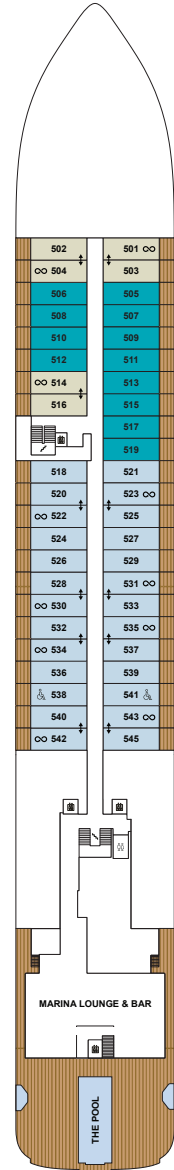
# THE RITZ-CARLTON YACHT COLLECTION



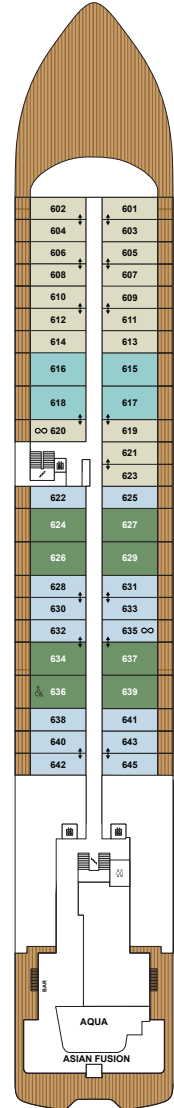
**DECK 3**  
THE MARINA TERRACE  
THE MARINA



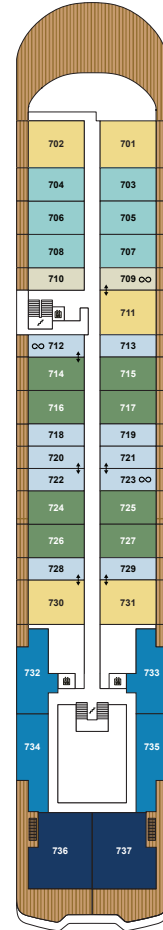
**DECK 4**  
THE MEETING ROOMS  
THE LIVING ROOM  
THE BOUTIQUE  
THE LIVING ROOM CAFE  
MAIN DINING EXPERIENCE  
DINING PRIVÉE  
505 – 519 LOWER LEVEL



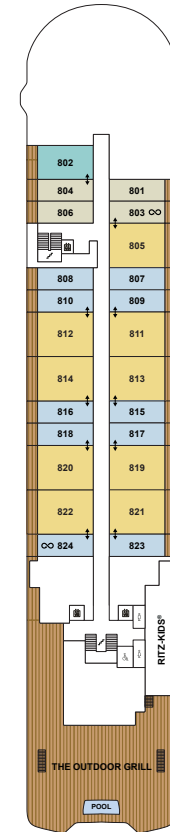
**DECK 5**  
MARINA LOUNGE & BAR  
THE POOL  
SUITES 501 – 545



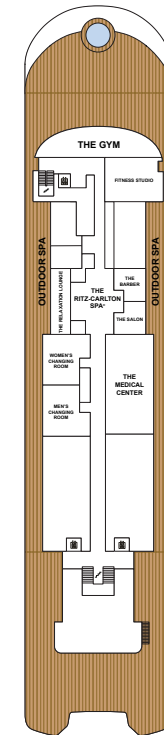
**DECK 6**  
BAR  
AQUA  
ASIAN FUSION  
SUITES 601 – 645



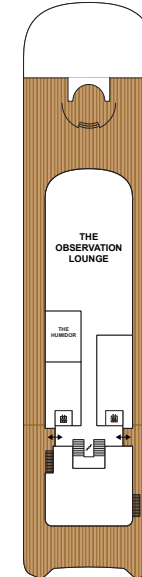
**DECK 7**  
SUITES 701 – 737



**DECK 8**  
THE OUTDOOR GRILL  
RITZ-KIDS®  
SUITES 801 – 824



**DECK 9**  
THE GYM  
FITNESS STUDIO  
SPA TREATMENT ROOMS  
THE RITZ-CARLTON SPA®  
THE BARBER /  
THE SALON  
THE MEDICAL CENTER



**DECK 10**  
THE OBSERVATION LOUNGE  
THE HUMIDOR

## SUITE CATEGORY

- THE OWNERS' SUITES \_\_\_\_\_
- THE VIEW SUITES \_\_\_\_\_
- THE LOFT SUITES \_\_\_\_\_
- THE GRAND SUITES \_\_\_\_\_
- THE SIGNATURE MID SUITES \_\_\_\_\_
- THE SIGNATURE SUITES \_\_\_\_\_
- THE TERRACE MID SUITES \_\_\_\_\_
- THE TERRACE SUITES \_\_\_\_\_
- ACCESSIBLE SUITES \_\_\_\_\_
- CONNECTING SUITES \_\_\_\_\_
- CONVERTIBLE SUITES\* \_\_\_\_\_

## YACHT SPECIFICATIONS

- GUEST CAPACITY \_\_\_\_\_ 298
- OFFICER AND CREW \_\_\_\_\_ 246
- TOTAL SUITES \_\_\_\_\_ 149
- TONNAGE \_\_\_\_\_ 26,500
- LENGTH \_\_\_\_\_ 624 FEET / 190 METERS
- WIDTH \_\_\_\_\_ 78 FEET / 23.8 METERS
- GUEST DECKS \_\_\_\_\_ 8
- BUILT \_\_\_\_\_ 2019
- YACHT'S REGISTRY \_\_\_\_\_ MALTA

\*\*Select Terrace Suites have the ability to convert into an expanded living and dining area or remain a second bedroom when connected to the adjacent suite.



## THE RITZ-CARLTON YACHT COLLECTION

### THE OWNER'S SUITE

**SUITE SIZE** 1098 SQ FT / 102 SQ M  
**TERRACE SIZE** 592 SQ FT / 55 SQ M  
**NUMBER OF SUITES** / 2

- Large private terrace with private whirlpool
- Luxurious and modern living and dining area
- Convertible sleep sofa
- Luxury custom king bed sleep system
- Two full, double vanity bathrooms
- Modern, sleek bathtub with separate shower
- Walk-in wardrobe
- Digital flat screen smart television
- In-suite safe
- Vanity mirror and hair dryer
- Hypoallergenic pillows, upon request
- 220v and 110v outlets, as well as USB charging capabilities



### THE GRAND SUITE

**SUITE SIZE** 635 SQ FT / 59 SQ M  
**TERRACE SIZE** 108 SQ FT / 10 SQ M  
**NUMBER OF SUITES** / 14

- Private terrace
- Luxurious and modern living and dining area
- Convertible sleep sofa
- Luxury custom king bed sleep system
- Double vanity bathroom
- Modern, sleek bathtub and shower system
- Dual walk-in wardrobes
- Digital flat screen smart television
- In-suite safe
- Vanity mirror and hair dryer
- Hypoallergenic pillows, upon request
- 220v and 110v outlets, as well as USB charging capabilities



## SUITE AMENITIES AND FEATURES

Wake up every morning relaxed and carefree, from one of our 149 expertly appointed suites. Designed to combine the modern elegance of The Ritz-Carlton® with the casual luxury of the world's most magnificent super yachts, our suites set a new standard for luxury travel.

- Suites feature private terrace
- Luxurious custom king bed sleep system
- Double vanity bathrooms

- Linens created exclusively for The Ritz-Carlton Yacht Collection
- Espresso machine with complimentary coffee and teas

- Refrigerator provisioned to your preferences
- Complimentary bottle of champagne or wine upon arrival

- 24-hour in-suite dining
- Individual robe and slippers
- Complimentary WiFi
- Dedicated Personal Assistant for all suites

### THE VIEW SUITE

**SUITE SIZE** UP TO 624 SQ FT / 58 SQ M  
**TERRACE SIZE** UP TO 97 SQ FT / 9 SQ M  
**NUMBER OF SUITES** / 4

- Dramatic floor to ceiling glass throughout
- Private terrace
- Luxurious and modern living and dining area
- Convertible sleep sofa
- Luxury custom king bed sleep system
- Double vanity bathroom
- Modern, sleek bathtub with separate shower
- Digital flat screen smart television
- In-suite safe
- Vanity mirror and hair dryer
- Hypoallergenic pillows, upon request
- 220v and 110v outlets, as well as USB charging capabilities



### THE LOFT SUITE

**SUITE SIZE** 700 SQ FT / 65 SQ M  
**TERRACE SIZE** 76 SQ FT / 7 SQ M  
**NUMBER OF SUITES** / 12

- Innovative two story suite
- Private terrace on the upper level
- Picture window on the lower level
- Luxurious and modern living and dining area on the upper level
- Convertible sleep sofa on the upper level
- Luxury custom king bed sleep system
- Double vanity master bathroom on the lower level
- Powder room on the upper level
- Modern, sleek bathtub with separate shower
- Digital flat screen smart television
- In-suite safe
- Vanity mirror and hair dryer
- Hypoallergenic pillows, upon request
- 220v and 110v outlets, as well as USB charging capabilities



UPPER LEVEL



LOWER LEVEL

### THE SIGNATURE SUITE

**SUITE SIZE** 474 SQ FT / 44 SQ M  
**TERRACE SIZE** 101 SQ FT / 9 SQ M  
**NUMBER OF SUITES** / 27

- Private terrace
- Luxurious and modern living and dining area
- Convertible sleep sofa
- Luxury custom king bed sleep system
- Double vanity bathroom
- Modern, sleek bathtub with separate shower
- Digital flat screen smart television
- In-suite safe
- Vanity mirror and hair dryer
- Hypoallergenic pillows, upon request
- 220v and 110v outlets, as well as USB charging capabilities



### THE TERRACE SUITE

**SUITE SIZE** 312 SQ FT / 29 SQ M  
**TERRACE SIZE** 67 SQ FT / 6 SQ M  
**NUMBER OF SUITES** / 90

- Private terrace
- Luxury custom king bed sleep system
- Double vanity bathroom
- Modern, sleek shower system
- Digital flat screen smart television
- In-suite safe
- Vanity mirror and hair dryer
- Hypoallergenic pillows, upon request
- 220v and 110v outlets, as well as USB charging capabilities
- Select Terrace Suites have the ability to convert into an expanded living and dining area or remain a second bedroom when connected to the adjacent suite.



EXPANDED LIVING AREA OPTION